

# Welcome to Kara:

## Connecting people and place.

Nestled among natural bushland, Kara is named after the Noongar word for a rare and protected orchid native to the Treeby area.

Featuring long, slender leaves all connecting to a central flower, the natural composition of this stunning plant is representative of Kara itself – whose welcoming and well-connected streets all lead into a central and sustainable hub.

A contemporary urban village, with a green heart and a bright future, Kara offers a sense of place and community.

And just like its orchid namesake, it's sure to become a natural and enduring part of the surrounding landscape.

### Size and location

- Located in Perth's South Eastern Corridor
- Set on 20 hectares, with a bush forever area north of the development
- Lots range in sizes from 180 – 600 sqm

### Parks and reserves

- A central park in the estate ensures all community residents are within a 5-minute walk from their home
- A central pavilion provides a gathering space for the community within the central area
- Range of playgrounds to suit all ages
- Large grass kickabout area and hardcourts
- Tree-lined streets and bush forever back drop
- Picnic and bbq spaces

### Hike and bike trails

- Hike and bike trails will connect residents to the future primary school, neighbourhood centre, bush forever, dog park, Cockburn Gateway Shopping Centre and Cockburn Central train station
- Easy access to a dedicated bike path adjacent to Armadale Road

### Education and community

- Within the catchment for Atwell Primary School and Atwell College
- New primary school opening in 2022 on Sapphire Drive, Treeby
- Close to Nido Early School and Goodstart Early Learning Centres
- New community centre opening in 2022
- Emmanuel Catholic College & Carey Baptist College (Yr 7-12) nearby

### Shopping and facilities

- 2km from Cockburn Gateway Shopping Centre – with over 170 stores including food, fashion and service retailers
- 5km to Cockburn Aquatic and Recreation Centre
- Close to Fiona Stanley Hospital and Murdoch University.

### Transport

- 4 train stops to Perth CBD
- Improved road infrastructure
- Upgrade of Armadale Road and freeway connections completed mid 2021
- Existing bus on Armadale Road and future bus route on Ghostgum Avenue



25 mins  
from Perth



4 train stops to  
Perth CBD



2km from  
Cockburn Gateway  
Shopping Centre



Surrounded by  
walking  
and cycle paths



Close to Fiona  
Stanley Hospital and  
Murdoch University



**KARA**  
TREEBY

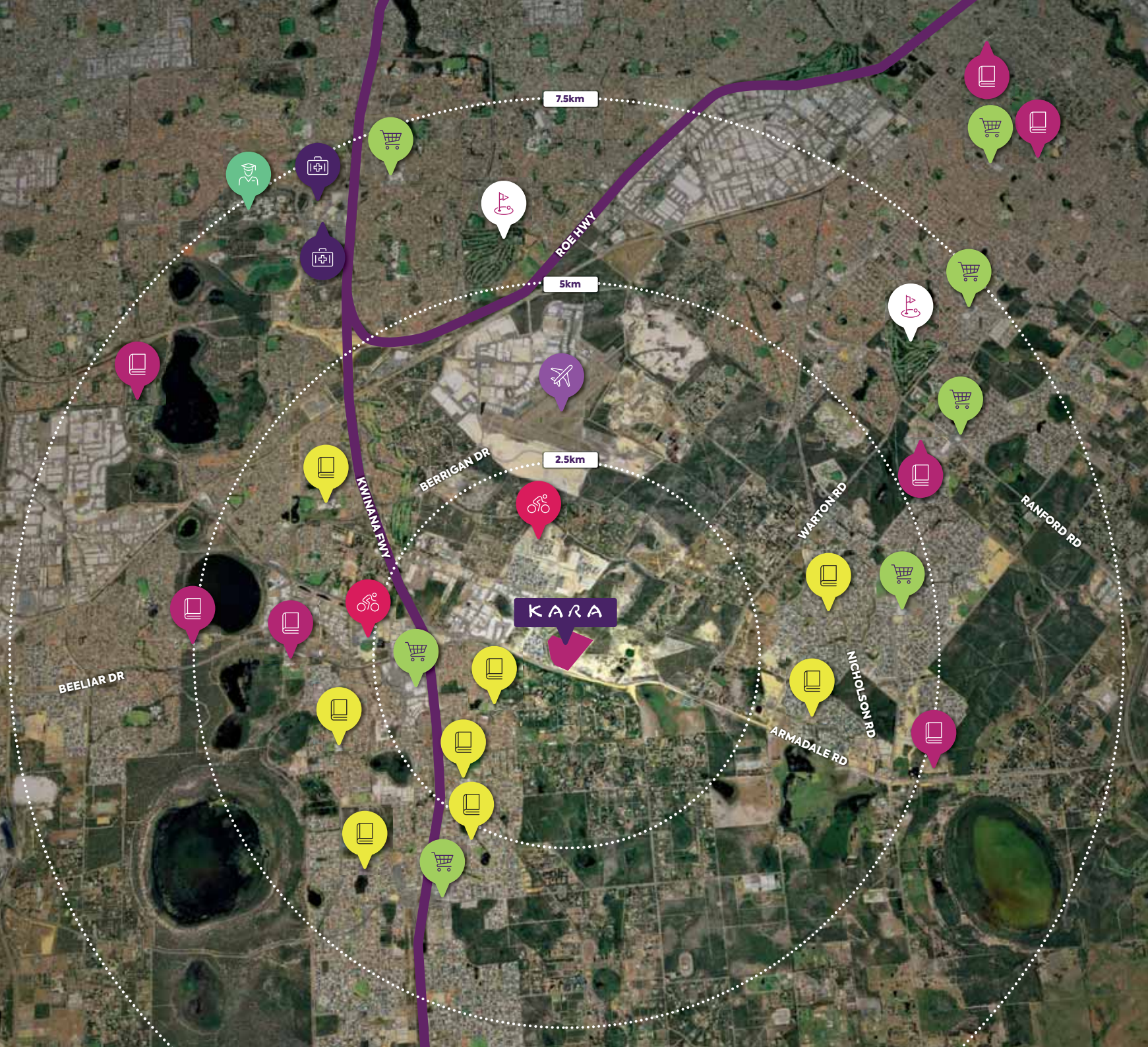


Government of Western Australia  
Department of Communities



For more information call 0402 426 119 or email [kara@lwpproperty.com.au](mailto:kara@lwpproperty.com.au) | [karaland.com.au](http://karaland.com.au)

# District Facilities



-  Hospital
-  Private school
-  Government School
-  Commercial Centre
-  Golf Course
-  University
-  Airport
-  Sporting Facility

